



Brighter Future

Cross Texas Transmission is working to increase the renewable energy supply and strengthen the existing transmission system in Texas. *by Eric Slack*

Cross Texas Transmission

www.crosstexas.com

Annual revenue: \$70 million

Headquarters: Austin

Employees: 29

Specialty: Transmission service

Cameron Fredkin, vice president of project development: "We have connected some of the most efficient wind power generation facilities in the world."



The need for energy is expanding quickly in Texas. Development of a more robust electric grid will ensure reliable power. Cross Texas Transmission (CTT) is developing projects that improve grid reliability and increase renewable energy adoption.

"We are known for being a leader in the industry who operates efficiently and effectively and delivers low-cost, reliable systems to their customers," Vice President of Project Development Cameron Fredkin says.

Essential Resources

CTT is a transmission service provider, carrying energy from generation to consumption. A subsidiary of LS Power, CTT operates and maintains transmission lines that deliver bulk power. Its system consists of a 235-mile, 345 kV, double circuit AC transmission line awarded by the Public Utility Commission of Texas to help deliver wind resources to millions of homes and businesses across Texas.

One focus for CTT has been its involvement in projects emanating from



Cross Texas Transmission is working on projects that are helping to improve grid reliability in Texas, while also increasing renewable energy adoption in the Lone Star State.

the Texas Panhandle, which is home to two Competitive Renewable Energy Zones (CREZ) – Panhandle A and B. The CREZ project was primarily designed to move electricity generated by renewable sources from West Texas and the Panhandle to more populated areas downstate including Dallas/Fort Worth, Austin and San Antonio. The \$6.8 billion project included more than 2,500 miles of high-voltage trans-

mission lines and substations throughout Texas.

CTT has helped deliver those resources by constructing three high-voltage transmission line segments totaling more than 235 miles across Briscoe, Carson, Childress, Collingsworth, Gray, Hall and Wheeler counties in the Panhandle. CTT's



transmission line segments include Gray to Tesla, Gray to White Deer and Silverton to Tesla.

“The project will improve the diversity of electrical generation supply and reliability of the electrical grid while providing access to significant renewable energy projects and improving air quality,” Fredkin says.

Devising Solutions

Another endeavor, in partnership with Garland Power & Light (GP&L), is the Limestone to Gibbons Creek project. In mid-2013, CTT and GP&L – the municipal utility for the city of Garland – saw that they could provide a solution for load growth and generation retirement issues in and around Houston, one of the largest load centers in the Electric Reliability Council of Texas (ERCOT) system.

CTT and GP&L selected PWR Solutions – now DNV GL – to identify and test transmission system alternatives that would mitigate Houston’s future reliability concerns. DNV GL’s potential solutions included a 120-mile, 345kV double-circuit line from Limestone to Gibbons Creek to Zenith, which ERCOT selected.

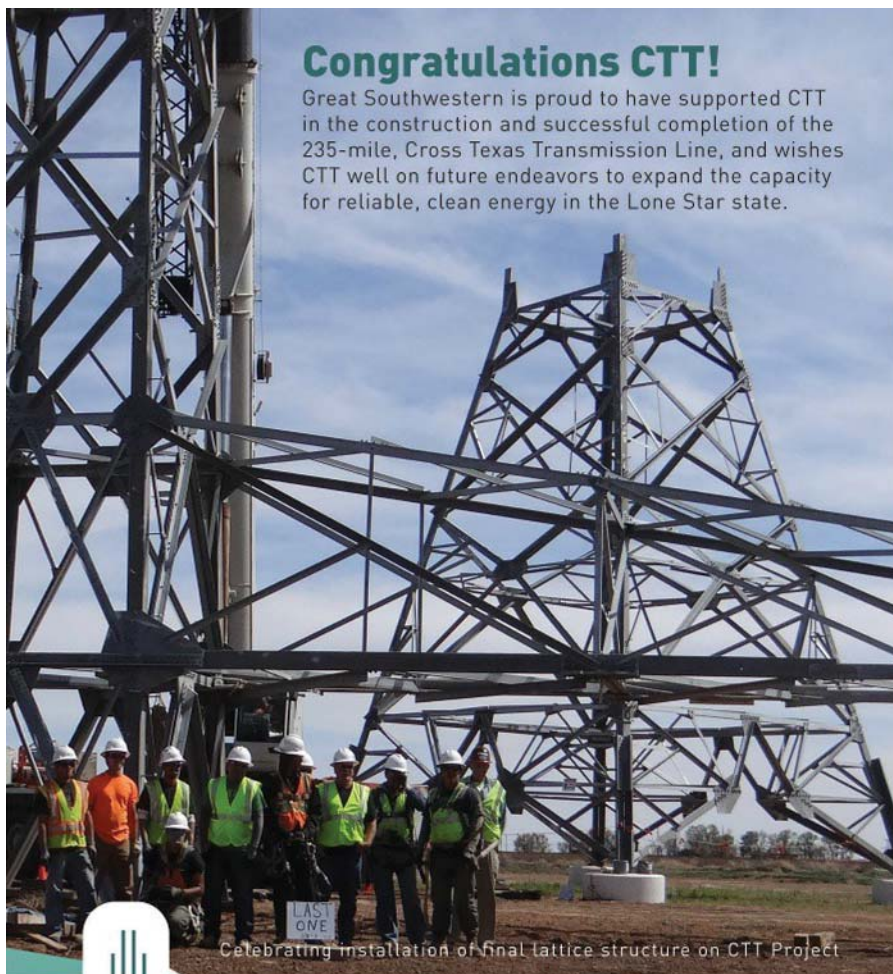
○ **MYR Group** Great Southwestern Construction, Inc. (Great Southwestern) is a subsidiary of MYR Group Inc. (MYR Group), consistently ranked as one of the top five specialty electrical contracting firms throughout the U.S.* Since 1977, Great Southwestern has been providing turnkey electrical construction services for transmission lines, substations and switchyards, and distribution systems. Clients include utilities, municipalities and private developers. Great Southwestern’s recent participation in the Cross Texas Transmission (CTT) project is a recent example of the organization’s ability to supply adequate and skilled manpower, project management, material and equipment necessary to execute the nation’s largest and most complex transmission projects that uphold the highest performance standards for safety, efficiency, and cost-effectiveness. Great Southwestern’s scope of work on the CTT project included all phases of electrical construction, project management, materials management and procurement services

*Engineering News-Record (ENR) List of Top Specialty Electrical Contractors

CTT will continue to help provide reliable energy and increase renewable resources in Texas. Ongoing growth in Texas should provide CTT with opportunities in the future.

“Among the challenges facing the

industry is reliably integrating large amounts of renewable energy into the existing electrical grid,” Fredkin says. “We are working to deploy technologies to address complex operational challenges in the marketplace.”○



Congratulations CTT!

Great Southwestern is proud to have supported CTT in the construction and successful completion of the 235-mile, Cross Texas Transmission Line, and wishes CTT well on future endeavors to expand the capacity for reliable, clean energy in the Lone Star state.

Celebrating installation of final lattice structure on CTT Project



**GREAT SOUTHWESTERN
CONSTRUCTION, INC.**

New!

CASTLE ROCK, CO | EL PASO, TX | DALLAS, TX

Providing turnkey electrical construction services since 1977.

Great Southwestern Construction is a subsidiary of MYR Group. Visit us at gswc.us and [f](#) [t](#) [in](#) [vr](#)